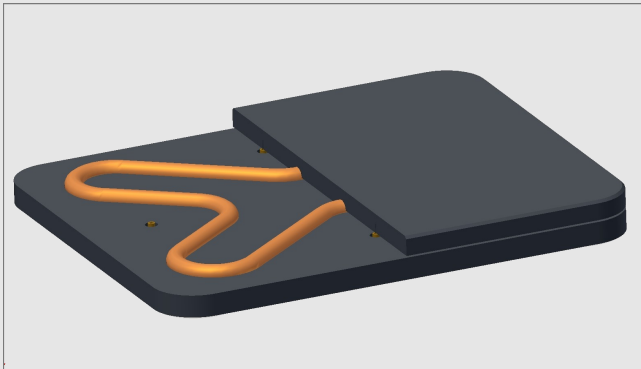


LEVI-BASE



The THALES LEVI BASE has been developed to provide perfect conditions for all kind of audio-gear which is sensible to vibrations (f. e. turntable, tube-amplifier). The challenge by doing so is to keep oscillations from outside away while guiding vibrations caused by the equipment itself away without enforcing them. We have improved a simple idea - bearing the gear on a pneumatic rubber-tube - to eliminate all disadvantage of such a principle as non-defined position and geometry, resonance, loss of air.

By guiding the air-tube inside a well defined channel, the free moving space is limited to ca. 1mm in all directions. This guiding groove at the same time enables the extra-thin air-tube to require much less pressure to provide highly effective decoupling properties (up to - 15dB).

Size: 480 x 430 x 50mm

Color: Black (others on request)

Cables



The experience in winding finest internal wirings of purest copper for our tonearms made us following this philosophy for specific Phono and Line cables. They are available from 1 to 3m length with different input and output-plugs.

ThalesPhono

Each conductor is made of two ultra-thin copper wires, pairwise twisted and casted into nylon. The cable is mechanically flexible to keep away airborne vibrations from the gear. It is available in the following configuration:

Input: RCA, XLR, DIN

Output: RCA, XLR

ThalesLine

Each conductor is made of ten ultra-thin copper wires, pairwise twisted and casted into nylon, shielded by an extra apiral-wire. It is available in the following configuration:

Input: RCA, XLR

Output: RCA, XLR